



CIVIL WAR TRUST

SAVING AMERICA'S
BATTLEFIELDS

BOARD OF TRUSTEES

Jeffrey R. Rodek
Columbus, Ohio
Chairman

O. James Lighthizer
Eldorado, Maryland
President

Thomas H. Lauer
Wellesley, Massachusetts
Vice Chairman

Mary Munsell Abroe
Wilmette, Illinois

Travis K. Anderson
Newton, New Jersey

Harrison M. Bains
New York, New York

Don Barrett
Lexington, Mississippi

Edwin C. Bearss
Arlington, Virginia

Terry Beaty, Jr.
Bethesda, Maryland

Kirk J. Bradley*
Sanford, North Carolina

John Campbell
Cottonwood Falls, Kansas

Carlton B. Crenshaw
Palmyra, Virginia

Jeff Dahlgren
Huntington Beach, California

Robert C. Daum
New York, New York

Vince Dooley
Athens, Georgia

Lester G. "Ruff" Fant, III*
Washington, D.C.

William J. Hupp
Glen Ellyn, Illinois

Steve Israel
Oyster Bay, New York

Kate Kelly
Los Angeles, California

Duke R. Ligon
Oklahoma City, Oklahoma

Jeffrey P. McClanathan
St. Petersburg, Florida

Richard Mills
Leesburg, Virginia

John L. Nau, III*
Houston, Texas

Stephan F. Newhouse
Vero Beach, Florida

J. Dennis Sexton
St. Petersburg, Florida

Madhu Tadikonda
New York, New York

Robert Uhler
Niwot, Colorado

William W. Vodra
Alexandria, Virginia

Susan Whitaker
Franklin, Tennessee

* Chairman Emeritus

December 8, 2017

The Honorable Phyllis J. Randall
Chair at Large
Loudoun County Board of Supervisors
1 Harrison Street, S.E., Fifth Floor
P.O. Box 7000
Leesburg, VA 20177

Dear Chair Randall:

I am writing on behalf of the Civil War Trust ("the Trust"), the nation's premier non-profit organization devoted to the preservation of America's hallowed battlegrounds. Although primarily focused on the protection of Civil War battlefields, through its Campaign 1776 initiative, the Trust also seeks to save the battlefields connected to the Revolutionary War and War of 1812. To date, the Trust has helped preserve more than 47,000 acres of battlefield land in 24 states, including 605 acres at Loudoun County's historic Aldie Battlefield.

With this letter, I seek to convey the Trust's concern with the proposed construction of a new fire station on core battlefield land in Aldie. We are guided in our comments by the Civil War Sites Advisory Commission ("CWSAC") and its *Report on the Nation's Civil War Battlefields*. Established in 1990, the CWSAC was tasked by Congress to identify America's most important Civil War sites. Out of the roughly 10,500 armed conflicts that occurred during the Civil War, only 384 of these — 3.7 percent — were recognized by the CWSAC as the war's principal battles, Aldie among them.

As illustrated on the attached map, the land currently envisioned to serve as the site of the new fire station falls entirely within Aldie's historic battlefield boundary — and much of it within the battlefield's core area. The CWSAC defines "core area" as "those places where the combat engagement and key associated actions and features were located."

Further, our examination of the presentation for the County's Historic District Review Committee and Heritage Commission drafted by Hughes Group Architects and dated October 3, 2017, makes clear that the new fire station is to be significantly larger than the current fire station, and — as a result — its construction stands to significantly impact the surrounding landscape and related resources. It is unclear to the Trust what, if any, mitigation measures the County is considering in the event that construction advances on the battlefield.

We recommend that this project only be permitted to proceed once appropriate mitigation measures have been delineated clearly and are vetted in consultation with the National Park Service's American Battlefield Protection Program, the Virginia Department of Historic Resources, the Trust and local stakeholders — or until a mutually satisfactory alternative to the project in its entirety can be substituted altogether. A new

Letter from the Civil War Trust (continued)

Page 2 of 2

December 8, 2017

fire station can be located many places; the Aldie Battlefield is, and will always be, located where Americans in blue and in gray fought and fell on June 17, 1863.

Thank you for the opportunity to submit these comments on behalf of our organization. The Trust is hopeful that the County will seek to chart a course for the new fire station in Aldie that fulfills the understandably diverse needs of the present without fraying the increasingly fragile links to our shared past. Please do not hesitate to contact us at (202) 367-1861 if you have any questions or wish to discuss our comments further.

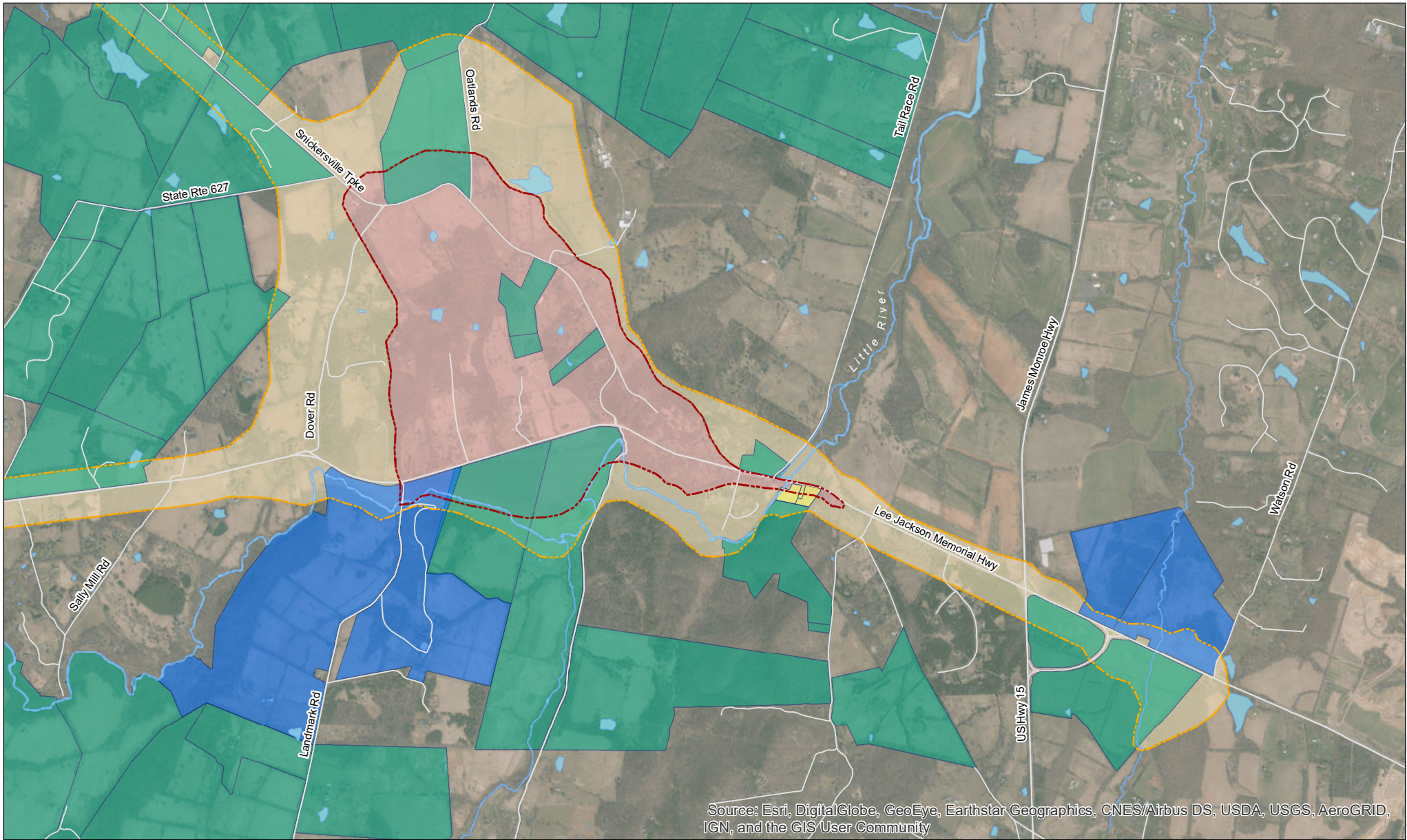
Sincerely,

A handwritten signature in black ink, appearing to read "O. James Lighthizer". The signature is fluid and cursive, with a large initial "O" and a long, sweeping underline.

O. James Lighthizer, President

Attachment: Map of Aldie Battlefield (Proposed Site of New Fire Station in Yellow)

CC: Jennifer Worcester Moore — President, Mosby Heritage Area Association
Paul Hawke — Chief, American Battlefield Protection Program
Julie Langan — Director, Virginia Department of Historic Resources



Prepared for the Civil War Trust

Loudoun County Board of Supervisors Property at Aldie Battlefield (Loudoun County, VA)

Created on 11/15/17 by JM

- Loudoun County Board of Supervisors Property
- Preserved in Whole or in Part by the Trust
- Other Protected Land and Easements
- Battlefield Core Area
- Battlefield Study Area

